



DIN 601 Hex Bolt

Leader-Fastener is a manufacturer and distributor of **DIN 601 Hex Bolt**. We have a complete line of service from having invested in production plants, export department and to having a quality control team and center to meet your requirements. We regard quality as the life of the company. We persist in good quality as the first policy and have established a set of quality control and inspection system according to the international standard. We have carried out ISO9001 Quality Guarantee System in every course of production, transportation and selling. We do hope we could be your partner in business by topping quality,

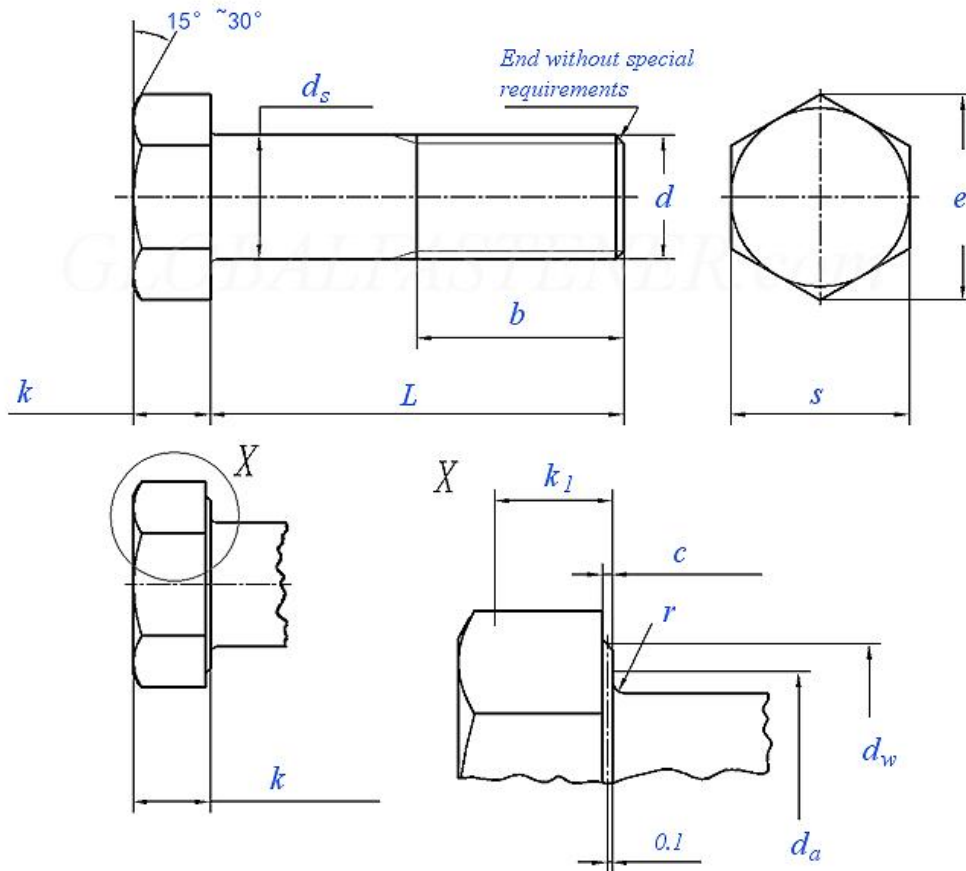
knight service and competitive price in the near future and be your friends as well.

DIN 601 - Hexagon head bolts with nut, production class C

Hex Cap Screws are hex headed fasteners with external machine screw threads and differ from hex machine bolts by having a washer surface on the underside or bearing side of the head and a chamfered thread end. Hex cap screws have tighter dimensional tolerances than bolts. Metric hex cap screws are specified by various DIN, ISO and JIS standards, and US/Imperial hex cap screws are dimensionally specified by the ASME B18.2.1 specification.

Hexagon bolts are hexagon head bolts (partial thread) - grade C and hex head bolts (full thread) - grade C, also known as hexagon head bolts (rough) hair hexagon head bolts, black iron screws. Hexagon bolts refer to fasteners composed of heads and screws. The bolts are divided into iron bolts and stainless steel bolts according to their materials. According to the grade of iron, there are 4.8 grade bolts and 8.8 grade bolts. Stainless steel bolts are made of stainless steel SUS201 bolts, SUS304 bolts, and SUS316 bolts.

In addition, in order to meet the needs of locking after installation, there are holes in the head and holes in the rod. These holes can prevent the bolts from loosening when they are subjected to vibration. Some bolts without threads should be made thin, called thin-waisted bolts. This kind of bolt is conducive to the connection of variable forces. There are special high-strength bolts on the steel structure. The head will be larger. The size will also change. In addition, there are special uses: T-slot bolts, most used on machine tool fixtures, special shapes, and both sides of the head should be cut off. Anchor bolts are used for machine and ground connection and fixing, there are many shapes, U-shaped bolts, as mentioned above, etc. There are also special studs for welding, one end has a thread and the other end is not, which can be welded on the part, and the other side can directly screw the nut.

DIN 601 - 1987 M5 to M52 hexagon head bolts—Product grade C


Screw Thread d		M5	M6	M8	M10	M12	M16	M20	M24	(M27)
P	Pitch	0.8	1	1.25	1.5	1.75	2	2.5	3	3
b	L ≤ 125	16	18	22	26	30	38	46	54	60
	125 < L ≤ 200	22	24	28	32	36	44	52	60	66
	L > 200	35	37	41	45	49	57	65	73	79
c	max	0.5	0.5	0.6	0.6	0.6	0.8	0.8	0.8	0.8
d _a	max	6	7.2	10.2	12.2	14.7	18.7	24.4	28.4	32.4
d _w	min	6.7	8.7	11.4	15.4	17.2	22	27.7	33.2	38
d _s	Nominal Size	5	6	8	10	12	16	20	24	27
	min	4.52	5.52	7.42	9.42	11.3	15.3	19.16	23.16	26.16
	max	5.48	6.48	8.58	10.58	12.7	16.7	20.84	24.84	27.84
e	min	8.63	10.89	14.2	18.72	20.88	26.17	32.95	39.55	45.2
k	Nominal Size	3.5	4	5.3	6.4	7.5	10	12.5	15	17
	min	3.12	3.62	4.92	5.95	7.05	9.25	11.6	14.1	16.1

	max	3.88	4.38	5.68	6.85	7.95	10.75	13.4	15.9	17.9
k ₁	min	2.2	2.5	3.45	4.2	4.95	6.5	8.1	9.9	11.3
r	min	0.2	0.25	0.4	0.4	0.6	0.6	0.8	0.8	1
s	max=nominal size	8	10	13	17	19	24	30	36	41
	min	7.64	9.64	12.57	16.57	18.48	23.16	29.16	35	40
Weight of per 1000 steel products(≈kg)		-	-	-	-	-	-	-	-	-
Length of Thread b		-	-	-	-	-	-	-	-	-

Screw Thread d		M30	(M33)	M36	(M39)	M42	(M45)	M48	(M52)
P	Pitch	3.5	3.5	4	4	4.5	4.5	5	5
b	L≤125	66	72	78	84	-	-	-	-
	125<L≤200	72	78	84	90	96	102	108	116
	L>200	85	91	97	103	109	115	121	129
c	max	0.8	0.8	0.8	1	1	1	1	1
d _a	max	35.4	38.4	42.4	45.4	48.6	52.6	56.6	62.6
d _w	min	42.7	46.5	51.1	55.9	59.9	64.7	69.4	74.2
d _s	Nominal Size	30	33	36	39	42	45	48	52
	min	29.16	32	35	38	41	44	47	51
	max	30.84	34	37	40	43	46	49	53
e	min	50.85	55.37	60.79	66.44	71.3	76.95	82.6	88.25
k	Nominal Size	18.7	21	22.5	25	26	28	30	33
	min	17.65	19.95	21.45	23.95	24.95	26.95	28.95	31.75
	max	19.75	22.05	23.53	26.05	27.05	29.05	31.05	34.25
k ₁	min	12.4	14	15	16.8	17.5	18.9	20.2	22.2
r	min	1	1	1	1	1.2	1.2	1.6	1.6
s	max=nominal size	46	50	55	60	65	70	75	80
	min	45	49	53.8	58.8	63.1	68.1	73.1	78.1
Weight of per 1000 steel products(≈kg)		-	-	-	-	-	-	-	-
Length of Thread b		-	-	-	-	-	-	-	-